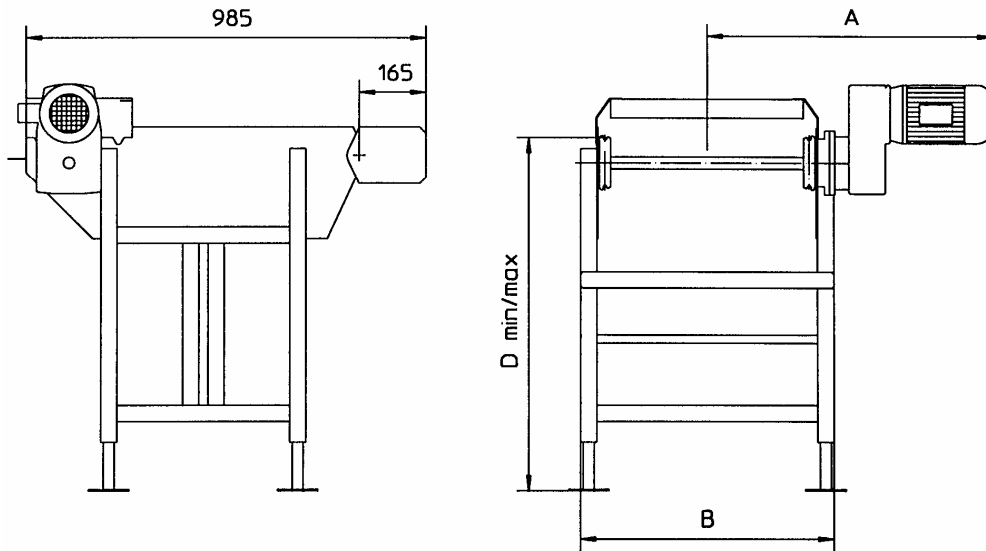
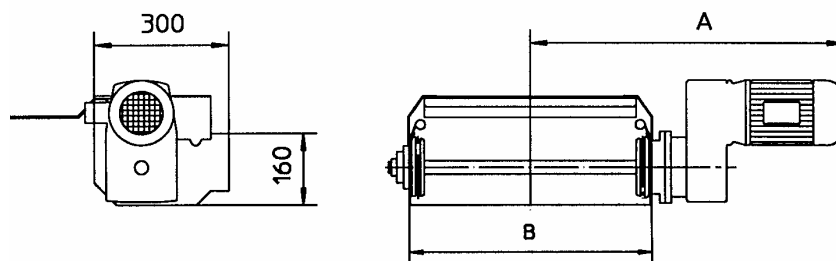


## Motore flangiato/Flange mounted



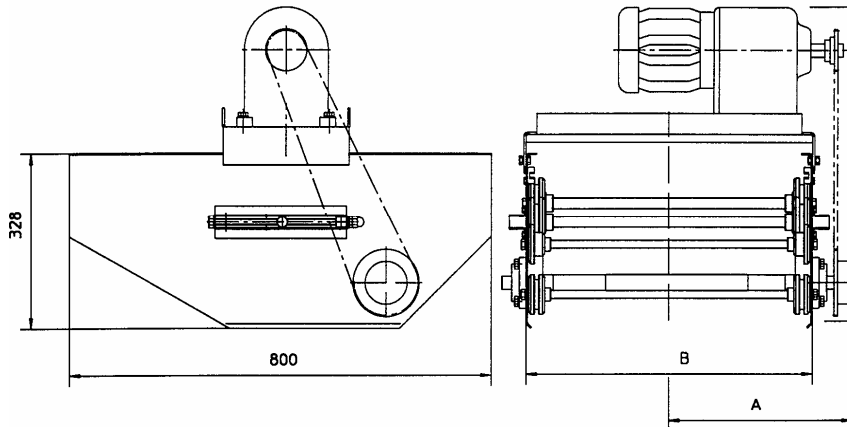
## Traino frontale/Front drive

Larghezza (mm)	A	B	D min	D max
250	570	370	940	1250
350	620	470	940	1250
500	695	620	940	1250
750	820	870	940	1250



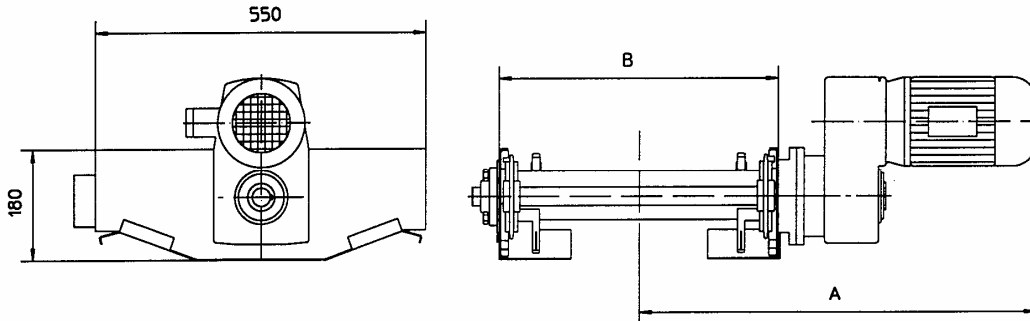
## Mini traino/Mini drive

Larghezza (mm)	A	B	H min/max	H min/max	H min/max
200	545	240	190-320	310-610	600-1300
250	570	290	190-320	310-610	600-1300
350	620	390	190-320	310-610	600-1300
500	695	540	190-320	310-610	600-1300
750	820	790	190-320	310-610	600-1300



## Traino finale/End drive

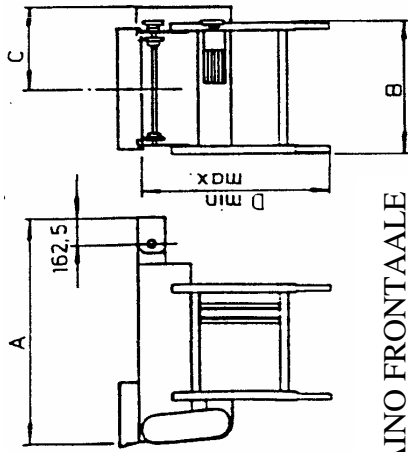
Larghezza (mm)	A	B	H min/max	H min/max	H min/max
350	297	390	190-320	310-610	600-1300
500	372	540	190-320	310-610	600-1300
750	497	790	190-320	310-610	600-1300



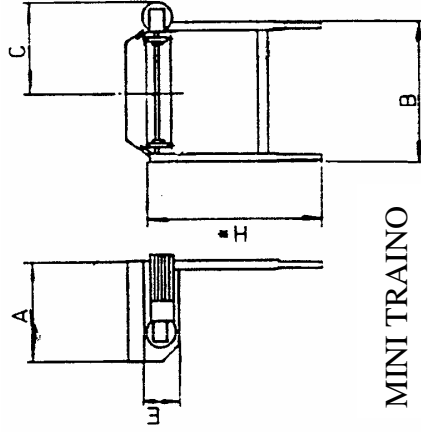
## Traino intermedio/Intermediate drive

Larghezza (mm)	A	B	H min/max	H min/max	H min/max
200	540	240	190-320	310-610	600-1300
250	565	290	190-320	310-610	600-1300
350	615	390	190-320	310-610	600-1300
500	690	540	190-320	310-610	600-1300
750	815	790	190-320	310-610	600-1300

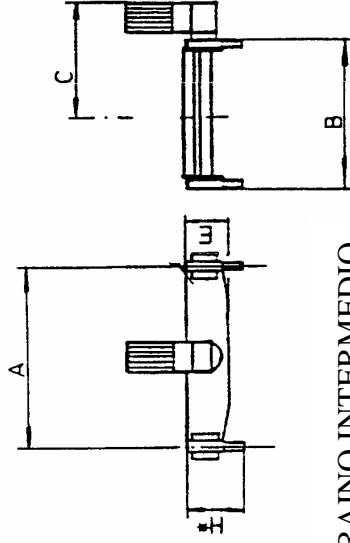
## MOTORE



TRAIÑO FRONTAALE



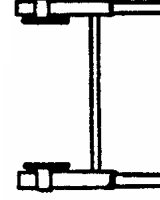
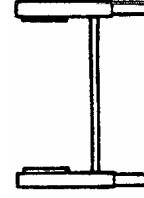
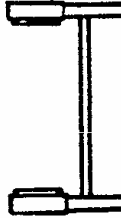
MINI TRAIÑO



TRAIÑO INTERMEDIO

Larghezz	A	B	C	D min	D max	A	B	C	H (mm)	E	A	B	C	H (mm)	E
200	-	-	-	-	-	300	304	281	*	170	550	304	310	*	180
250	980	377	259	940	1250	300	354	306	*	170	550	354	335	*	180
350	980	477	309	940	1250	300	454	356	*	170	550	454	385	*	180
500	980	627	384	940	1250	300	604	431	*	170	550	604	460	*	180
750	980	877	509	940	1250	300	854	556	*	170	550	854	585	*	180

## SUPPORTI PAVIMENTO



## RUOTANTE

H\* = altezza dal pavimento alla catena

H min 190

600

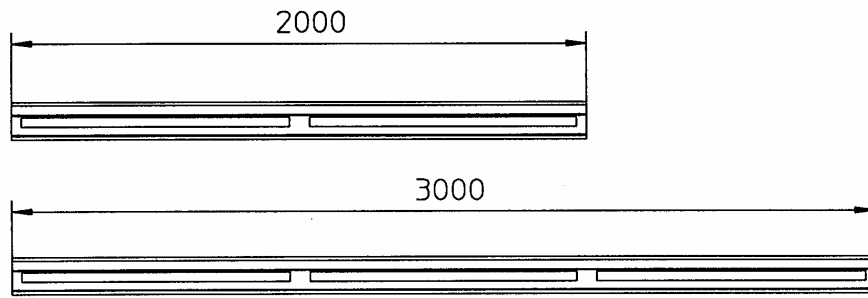
300

H max 320

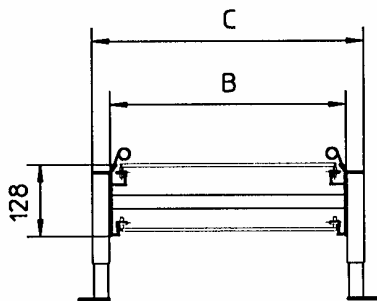
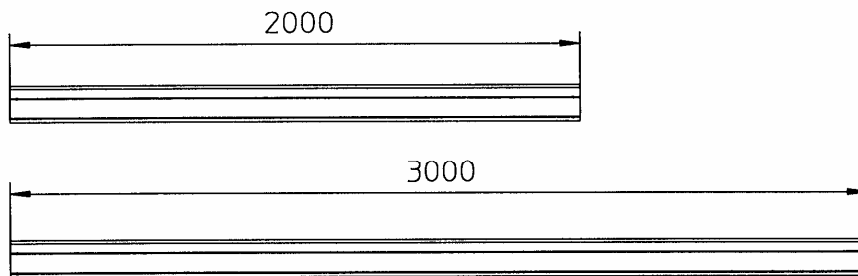
1300

1100

## Elemento collegamento aperto

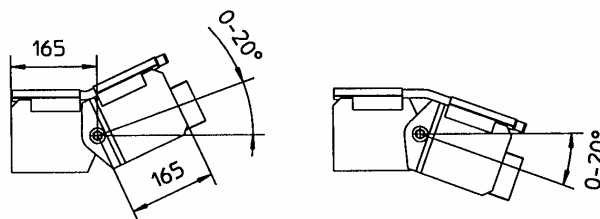


## Elemento collegamento chiuso

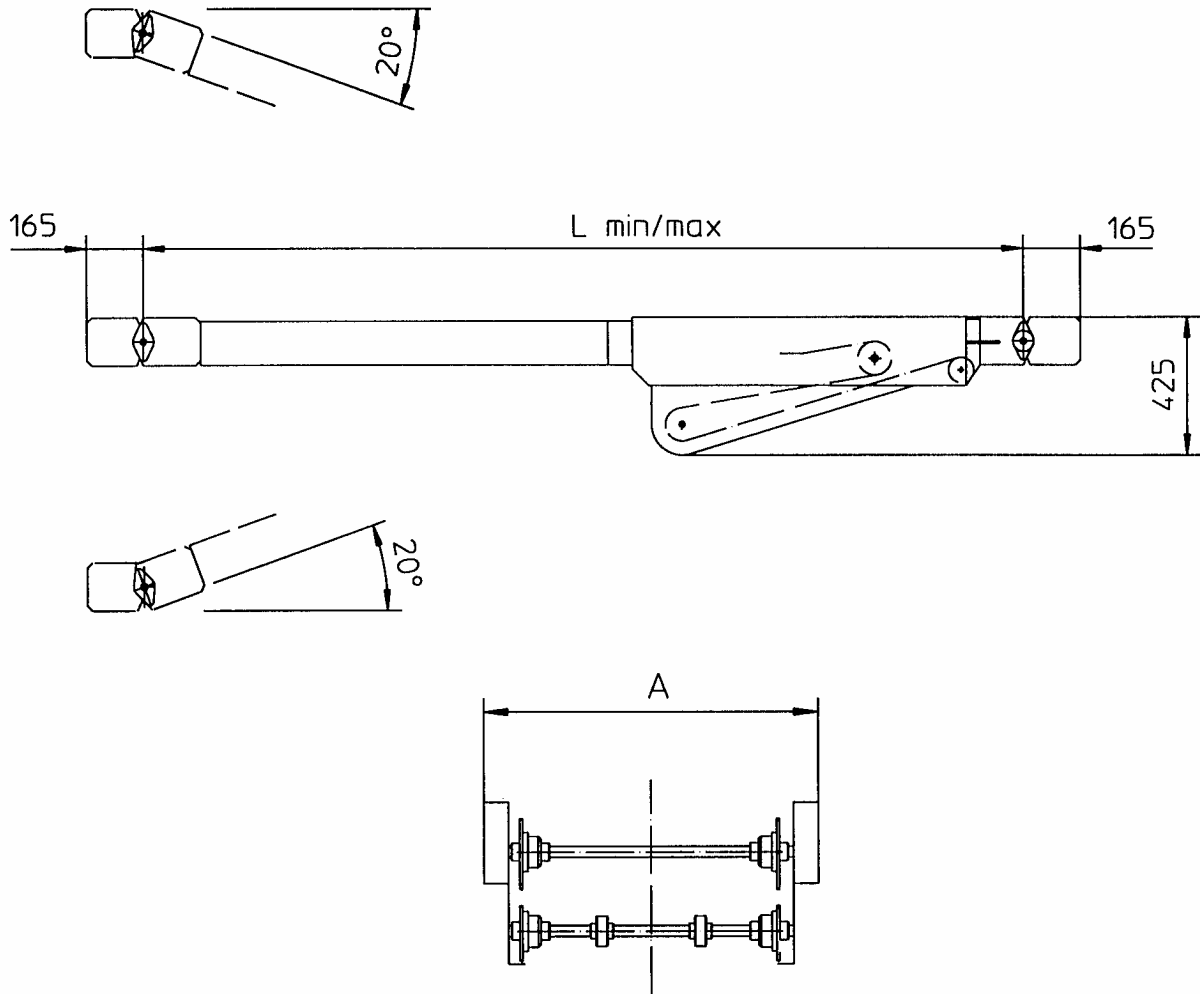


Larghezza (mm)	B	C
200	240	304
250	290	354
350	390	454
500	540	604
750	790	854

## Unità salita-discesa



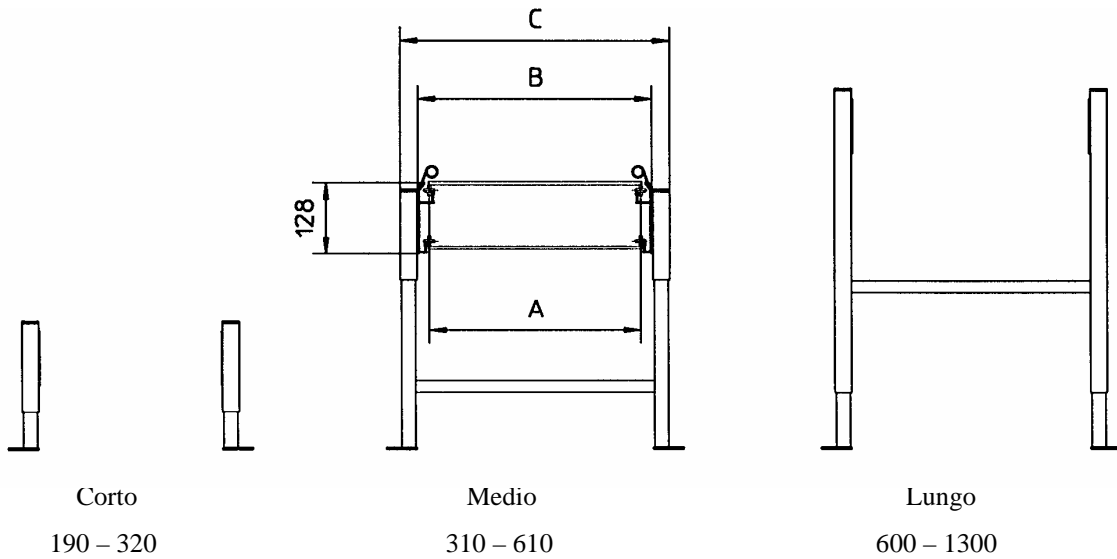
## Unità telescopica



### Estensione possibile fino a 2 m

Larghezza (mm)	A	L min	L max
200	344	3375	3775
250	394	3375	3775
350	494	3375	3775
500	644	3375	3775
750	894	3375	3775

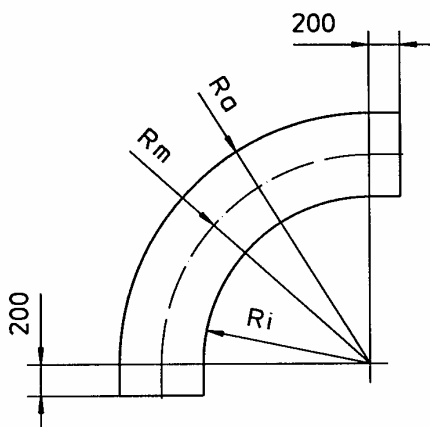
## Supporto pavimento



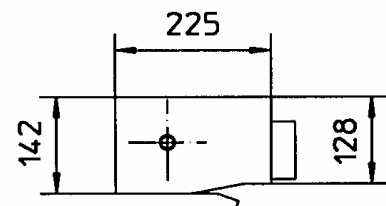
Altezza dal pavimento alla catena (mm)

Larghezza (mm)	A	B	C	R i	R m	R a
200	200	240	304	420	540	660
250	250	290	354	530	675	820
350	350	390	454	750	945	1140
500	500	540	604	1080	1350	1620
750	750	790	854	1630	2025	2420

## Curva



## Gruppo finale



## Gruppo finale con tensionatore

